



A Stronger, More Resilient Economy: *An Update to the FNSB Comprehensive Economic Development Strategy*

FEDCo Forestry Roundtable

Slides with blue headers include discussion notes from the meeting

December 2, 2021



Introduction & Purpose

Invited Participants

Affiliation	Name	Notes
Alaska Center for Energy and Power	Amanda Byrd	Absent
Alaska Department of Natural Resources, Division of Forestry	John Maisch	Retired
Alaska Department of Natural Resources, Division of Forestry	Douglas Hanson	Retired
Alaska Department of Natural Resources, Division of Forestry	Jeremy Douse	Attended
Alaska Energy Authority	Taylor Asher	Attended
Fairbanks North Star Borough – Natural Resources	Daniel Welch	Attended
Southeast Conference	Karen Petersen	Attended
Superior Pellet Fuels	Chad Shumacher	Absent
University of Alaska Fairbanks	Nicole Molders	Absent
University of Alaska Fairbanks	Robert McCoy	Absent
University of Alaska Fairbanks	Glen Holt	Attended
University of Alaska	Laura Carmack	Attended
U.S. Department of Agriculture	James (Jim) Archuleta	Absent
<i>Facilitated by Shelly Wade and Molly Mylius, Agnew::Beck, with support from Renee Linton at FEDCo</i>		

The Project Team



FNSB Project Manager:
Brittany Smart



Contracting Team:
Shelly Wade, AICP
Molly Mylius

Project Steering Committee: the FNSB Economic Development Commission

Supporting team
members:



Project Purpose

To develop an updated Five-Year FNSB Comprehensive Economic Development Strategy (CEDS).

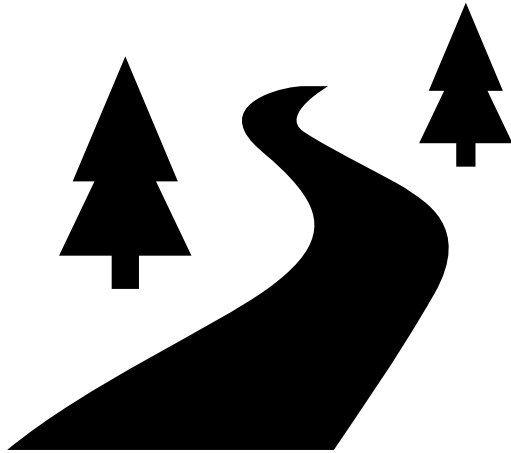


CEDS must go through a robust update every five years, with shorter, less intensive updates annually.



CEDS Purpose

A CEDS is a locally-based, regionally-driven economic development planning document that guides local government and community action.



It serves as a road map to economy resilience and prosperity.

What does a CEDS do?

- Brings the private and public sector together to develop a regional strategy and action plan.
- Identifies projects and makes recommendations to:

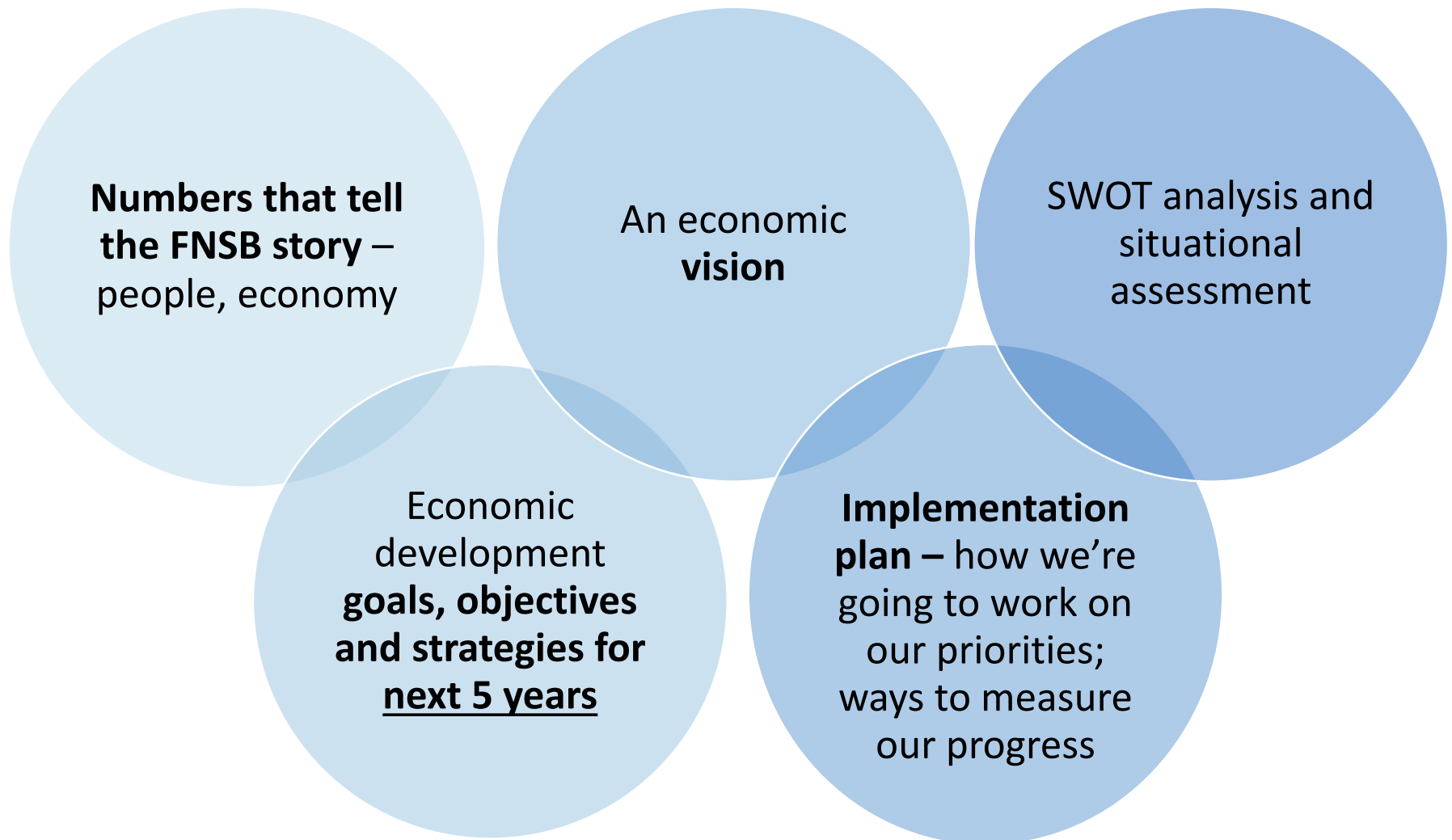
Secure and
support
businesses

Create
more and
better
paying jobs

Improve
quality of
life

Increase
resilience
to changes,
threats

What does a CEDS include?




CEDS Update Timeline

	2021									2022						
	Apr	May	Jun	Jul	Aug	Sep	Oct	Nov	Dec	Jan	Feb	Mar	Apr	May	Jun	→
Project Website	•	← ongoing website updates →														Adoption
Stakeholder Interviews	•	•	•	•	•	•	•	•	•							
Interactive Discussions	•	•	•	•	•	•	•	•	•							
Community Events			Midnight Sun, Golden Days, Fair													
Economic Summit										•						
E-Newsletters, Social Media, Public Notices, News, Radio										•	•		•		•	
Key Phases	<i>Project Kickoff</i>		<i>Research & Events, Interviews</i>				<i>Draft Vision & Goals</i>			<i>Economic Summit</i>		<i>Public Review Draft</i>			<i>Final CEDS</i>	→

We are here

Community Events

A photograph of a booth at the Midnight Sun Festival. A white sign on a stand asks, "What do you find the most challenging about living in Fairbanks?" and "Write it on a Post-It!". The sign is decorated with a blue bow. Surrounding the sign are several colorful Post-It notes with handwritten responses. Some visible notes include: "lack of recreational activities", "unexpected weather & other things", "costs (e.g. shipping)", "Winters", "cost of energy", "supplies, especially for outdoor gear", "Public Transportation", "cost of food at restaurants", "cost of living", and "cost of housing".

June 2021: Booth at Midnight Sun Festival

A photograph of a booth at the Golden Days event. A large white sign on a stand asks, "What do you value most about living in Fairbanks?" and "Write it on a Post-It!". The sign is decorated with a blue bow. The background wall is covered with many colorful Post-It notes. A person is visible in the foreground, looking at the notes.

July 2021: Booth at Golden Days

A photograph of a booth at the Tanana Valley State Fair. A white sign on a stand asks, "What do you... VALUE MOST OR Find the MOST CHALLENGING about LIVING (or visiting!) Fairbanks?" and "WRITE IT ON A POST-IT!". The sign is decorated with a blue bow. The background wall is covered with many colorful Post-It notes. A person is visible in the foreground, looking at the notes.

August 2021: Booth at Tanana Valley State Fair

Proposed FNSB CEDS Topics/Sectors

Industry Clusters

key sectors that drive the FNSB economy

Education + Research

Energy

Healthcare

Military

Natural Resources (*Agriculture, Forestry, Mining*)

Visitation

Community Influencers

supportive foundations that clusters rely on to grow and flourish

Communications

Government

Housing and Land Use

Quality of Life

Transportation

Utilities

Workforce Development

How does the CEDS benefit industry?

The CEDS will:

- Include a **dedicated “1-Pager” for each industry cluster** – tailored snapshot, SWOT, goals, strategies and implementation actions.

How does the CEDS benefit industry?

The CEDS will:

- Include a **dedicated “1-Pager”** for each industry **cluster** – tailored snapshot, SWOT, goals, strategies and implementation actions.
- Articulate a **shared economic development vision and goals** for industry, consumers, government.

How does the CEDS benefit industry?

The CEDS will:

- Include a **dedicated “1-Pager” for each industry cluster** – tailored snapshot, SWOT, goals, strategies and implementation actions.
- Articulate a **shared economic development vision and goals** for industry, consumers, government.
- Position the community/industry for **funding and investment opportunities**.

How does the CEDS benefit industry?

The CEDS will:

- Include a **dedicated “1-Pager” for each industry cluster** – tailored snapshot, SWOT, goals, strategies and implementation actions.
- Articulate a **shared economic development vision and goals** for industry, consumers, government.
- Position the community/industry for **funding and investment opportunities**.
- Hold everyone accountable with **measurable short and longer-term targets** and **ways to track and communicate progress**.


Forestry Context

Forestry: Highlights from 2016 CEDS

(note: attendees indicate this data has largely remained unchanged since 2013)

- Tanana Valley State Forest covers approximately 1,798,727 acres in Interior Alaska; about one-third of the forest is within the FNSB boundaries.
- The State of Alaska manages forest lands for timber in the Fairbanks Management Area. The State establishes maximum allowable amounts of timber for harvesting.

EXISTING CONDITIONS IN TANANA VALLEY WITH RESPECT TO TIMBER: MANAGEMENT AREA TIMBERLAND ACREAGE AND VOLUME SUMMARY

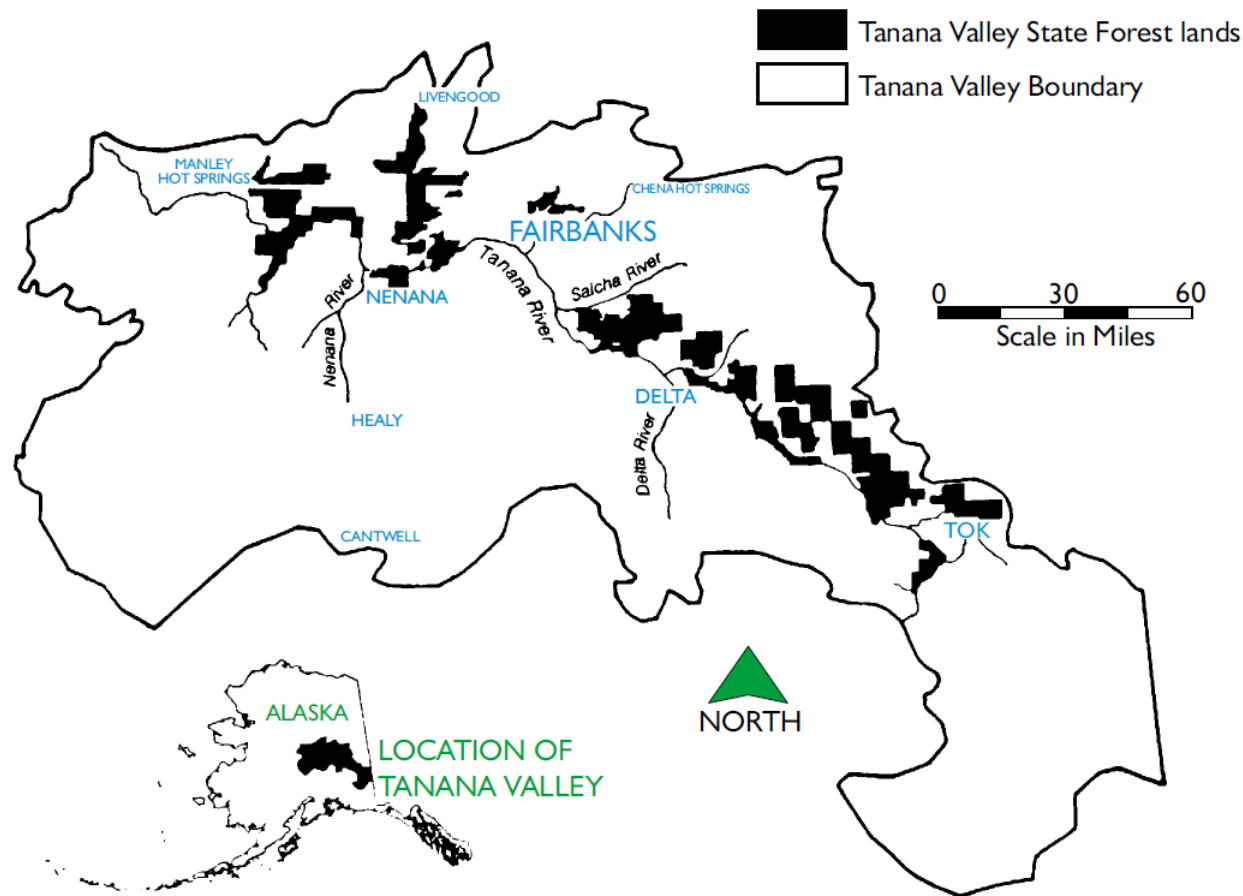


MANAGEMENT AREAS	TOTAL ACRES	TIMBERLAND ACRES	TOTAL NET CUBIC VOLUME (MCF)	TOTAL NET BOARD FOOT VOLUME (MBF)
Kantishna	569,324	438,235	431,486	806,820
Fairbanks	860,366	633,292	699,571	1,480,844
Delta	851,736	639,801	637,537	1,297,644
Tok	591,813	441,607	304,165	472,199
Totals	2,873,239	2,152,935	2,072,759	4,057,506

Source: Applied Development Economics, based on State of Alaska Dept. of Natural Resource, Division of Forestry, "Timber Inventory of State Forest Lands in the Tanana Valley 2013" (p. 1)

Map of Tanana Valley State Forest Lands

TANANA VALLEY STATE FOREST



Forestry: Strengths and Weaknesses of the Region

1. What **factors contribute** to a successful forestry sector in the FNSB/Interior AK?
2. What **factors are a barrier** to a successful forestry sector in the FNSB/Interior AK?

Discussion: Strengths and Opportunities

- Forest management partnerships around shared priorities. For example, logging and recreation both need to consider fires, spruce beetles, access. Tanana Valley State Forest Citizens Advisory Committee a positive example of collaboration.
- Spruce bark beetle harvest sales.
- Managing roads so they can be used for recreation, too.
- Road construction that considers long-term uses beyond immediate logging functions; improved construction methods that reduce environmental impacts (e.g., at stream crossings).
- Programs available to help communities interested in installing biomass infrastructure.

Discussion: Barriers (Weaknesses, Threats)

- Spruce bark beetle infestations.
- Opposition to timber harvests in areas with popular but unprotected trails.
- Trail user conflicts on forestry trails (e.g., between dog mushers, horse back riders, motorized users).
- Access to resources; limited infrastructure and sometimes winter-only access.
- Environmental impacts of logging roads.
- Long rotation of harvestable species (e.g., white spruce requires 125 years to grow from seedling to something of harvestable value).
- Climate change and wildfires.
- High staff turnover and loss of operational knowledge in communities installing biomass.

2016 CEDS Goal: Promote Additional Diversified Industries & Manufacturing.

Relevant Objectives:

- Promote wood-products manufacturing industry cluster (i.e. furniture manufacturing and forest products).
- Maximize timber harvest opportunities in the Tanana Valley Forest.

Tanana Chiefs Conference CEDS Forestry Strategy (proposed priority)

Priority Strategy K:



Manage local forests to maximize productivity of local biomass for heating and construction materials (potentially via shared wood lots) and to reduce threats from wildfires.

The TCC CEDS is out for public comment. **Deadline is December 19, 2021.**

<https://www.tananachiefs.org/ceds/>

What are the forestry trends in FNSB/ Interior and how can we measure success?

What/Data	Source
Timber harvests	<i>Alaska Division of Forestry</i>
Annual allowable cuts	<i>Alaska Division of Forestry</i>

What other data, sources should we consider?

Discussion: Data

- This is a working document and it's important to acknowledge these numbers will change from year to year due to unknown events like wildfires. It's important to leave room for change and adaptability.
- The acreage shared on slide 22 is very similar today.
- Five-year timber sales, done regionally; updated every two years.

Discussion: Actions

- What can we do over the next five years to grow and strengthen the forestry sector?

For example, what projects/strategies will:

- Increase local employment in the industry
 - Increase value-added manufacturing
 - Increase industry resilience and mitigate vulnerabilities
- What is most important for us to focus on over the next five years?
 - What measurable progress do we want to make over the next five years?

Discussion: Initial Thoughts

- FEDCo developed a prospectus a few years ago that was very helpful for requesting funding; would be helpful to have an updated version.
- Consider establishing a Buy Local Wood program
- Ensure that forest management activities are not excluded from the array of permitted uses within the entire area and obviously in the TVSF.
- General support for the strategy shared in the TCC CEDS:
 - Manage local forests to maximize productivity of local biomass for heating and construction materials (potentially via shared wood lots) and to reduce threats from wildfires.

Next Steps & Wrap-Up

Next Steps

- December 2021 – Conclude sector outreach
- **February 2022 – Economic Summit**
 - Who else should we invite to participate in this conversation? (esp. private sector)
- April 2022 – Release public review draft
- June 2022 – Release final draft

Discussion: Others to Invite to the Forestry Discussion at the Economic Summit

- Brad Cox – Alaska Logging and Milling
- Jason Knowles – Northland Wood
- Jim Archuleta – U.S.D.A. Forest Service Biomass and Wood Innovation Coordinator (based in Portland, OR)
- Joe Young – Young's Timber (Tok)
- Priscilla Morris – U.S.D.A. Forest Service
- Tony Lee – Alaska Gateway School District (Tok)
- The Alaska Division of Lands person that writes permits for uses that include non-timber forest products; e.g., sap, bark, mushrooms, etc.
- Local loggers, lumber yard owners, and contractors

Learn More on Our Website



2021 Fairbanks North Star Borough Comprehensive Economic Development Strategy (CEDS) Update

[PURPOSE](#)[WHAT IS INCLUDED?](#)[TOPICS](#)[PROJECT TEAM](#)[GET INVOLVED](#)[SCHEDULE](#)[RESOURCES](#)[CONTACT US](#)

A Stronger, More Resilient Economy.

www.FNSBCEDS.com

Other Relevant Planning Efforts

Tanana Chiefs Conference Comprehensive Economic Development Strategy	<u>www.tananachiefs.org/ceds/</u>
Comprehensive Roads Plan	<u>fnsbroadspan.com/</u>
Fairbanks Downtown Plan	<i>Updated website coming soon</i>
Comprehensive Recreational Trails Plan	<u>fnsbtrailsplan.com/</u>
Pioneer Park Master Plan	<u>fairbankspioneerparkplan.com/</u>

Thank you!

Brittany Smart

FNSB Project Manager

brittany.smart@fnsb.gov

907-459-1302

Shelly Wade, AICP

Agnew::Beck Consulting Project Manager

shelly@agnewbeck.com

907-242-5326

Want to learn more? Visit our website: FNSBCEDS.com